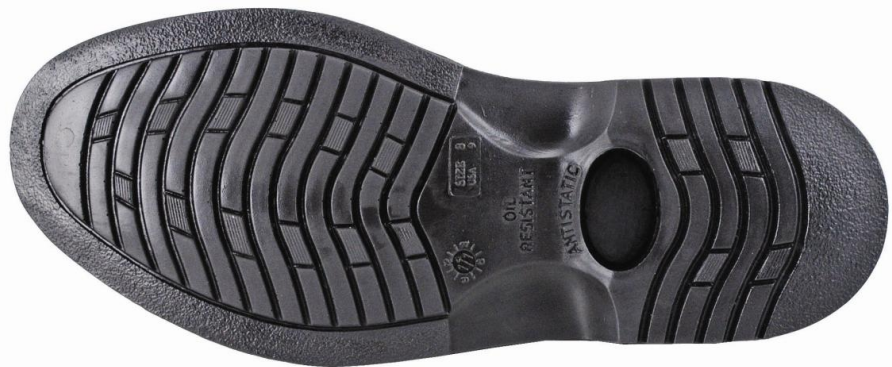


## TECHNICAL SPECIFICATIONS OF GENTS SLIP ON CLEAN ROOM

Description	Specifications
Brand	JCB
Shoe Name	Exec Shoe
Operative Standard	Meets IS 15298:2002 Part I & II & EN 20345 CE Marked
Description	Black Formal Shoe Single <b>Density</b> Slip resistant Direct Injected PU Sole. Nail less. As per design A (4.2 of IS 15298 part 1)
SIZES	UK ( Range 5-13)
Height & size of shoe	Less than 113 mm for size 8 (+/- 5mm)
Color	Black
Marking	As per IS 15298 (Part 2):2002 Clause 6 or EN 20345 CE marking
Electrical Properties	Antistatic. Resistance between 100 Kilo Ohms & 1000 mega ohms
Upper leather	Full Grain CG Leather
Upper I thickness	As per S 15298:2002 Part I & II & EN 20345
Vamp lining	Non woven Polyester
Tongue & Collar	Normal Tongues & Padded Collar 12 mm Foam Cushion
Lining other than vamp	Cambrelle Lining
Socks	Full EVA padded
Insole	Non Woven Antistatic
Out Sole	Black PU Single density
Sole fixation	Direct injection process on DESMA Machines
Other	Nail less construction
HEEL STIFFNER	Molded stiffener for additional support.
Sole Cleated Area	As per 4.8 of IS 15298 & EN 20345
Cleat Height (thickness)	As per 4.8 of IS15298 & EN 20345
Sole Thickness Non cleated	As per 4.8 of IS 15298 & EN 20345
Sole Abrasion Resistance	As per 4.8.4 of IS, 15298 & EN20345
Sole Flexing Resistance	As per 4.8.5 of IS 15298 & EN 20345
Inter Layer Bond Strength	As per 4.8.7 of IS 15298 & EN 20345
Steel Toecap	Rust resistant Epoxy Coated EN 12568 marked imported with polymer Comfort strip. Level of protection 200 joules. Also protect against compression injury
Padding under steel toe	Polymer Strip for comfort
Thread	Black Nylon 20 and 40 No.
Fastening	Elastic Gusset under Tongue
MARKING	CE or as per IS 15298 Part II Antistatic
SUITABLE FOR	Work/Casual Wear
Branding on Upper	JCB two colored Polymer Label on outer side
Branding on Socks	JCB Fabric woven label on heel area of the socks



Sole Licensee in India  
**RAHMAN INDUSTRIES LTD**

310, Krishna Towers, 15/63, Civil Lines,  
KANPUR 208001 INDIA

PH: + 91 512 2331072

FAX: + 91 512 2330601 & 2464357

MOB: 91 9336811103 & 91 9336110112

[kt@rahman-group.com](mailto:kt@rahman-group.com)

[www.jcbfootwear.in](http://www.jcbfootwear.in)